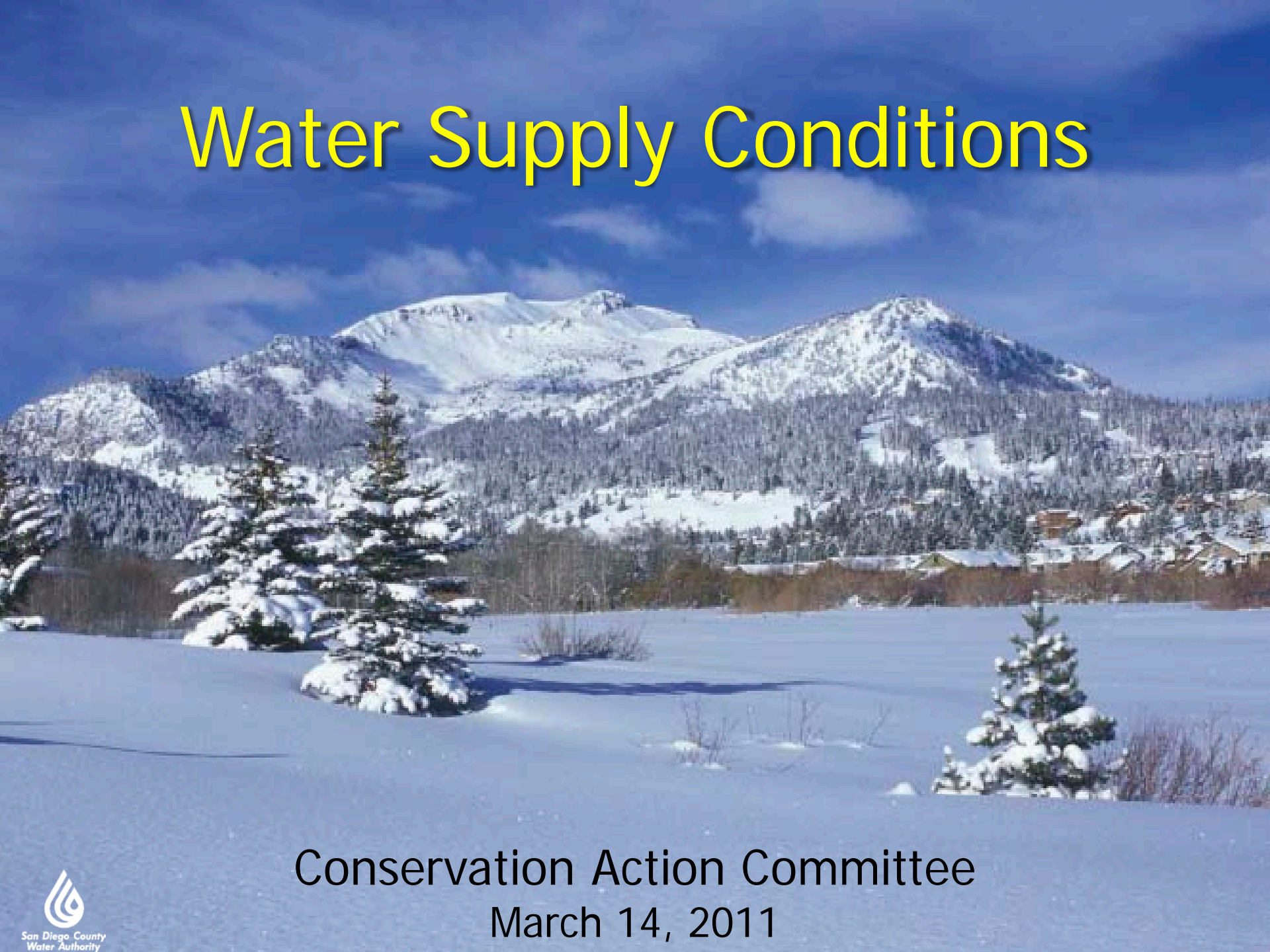


Water Supply Conditions



Conservation Action Committee

March 14, 2011



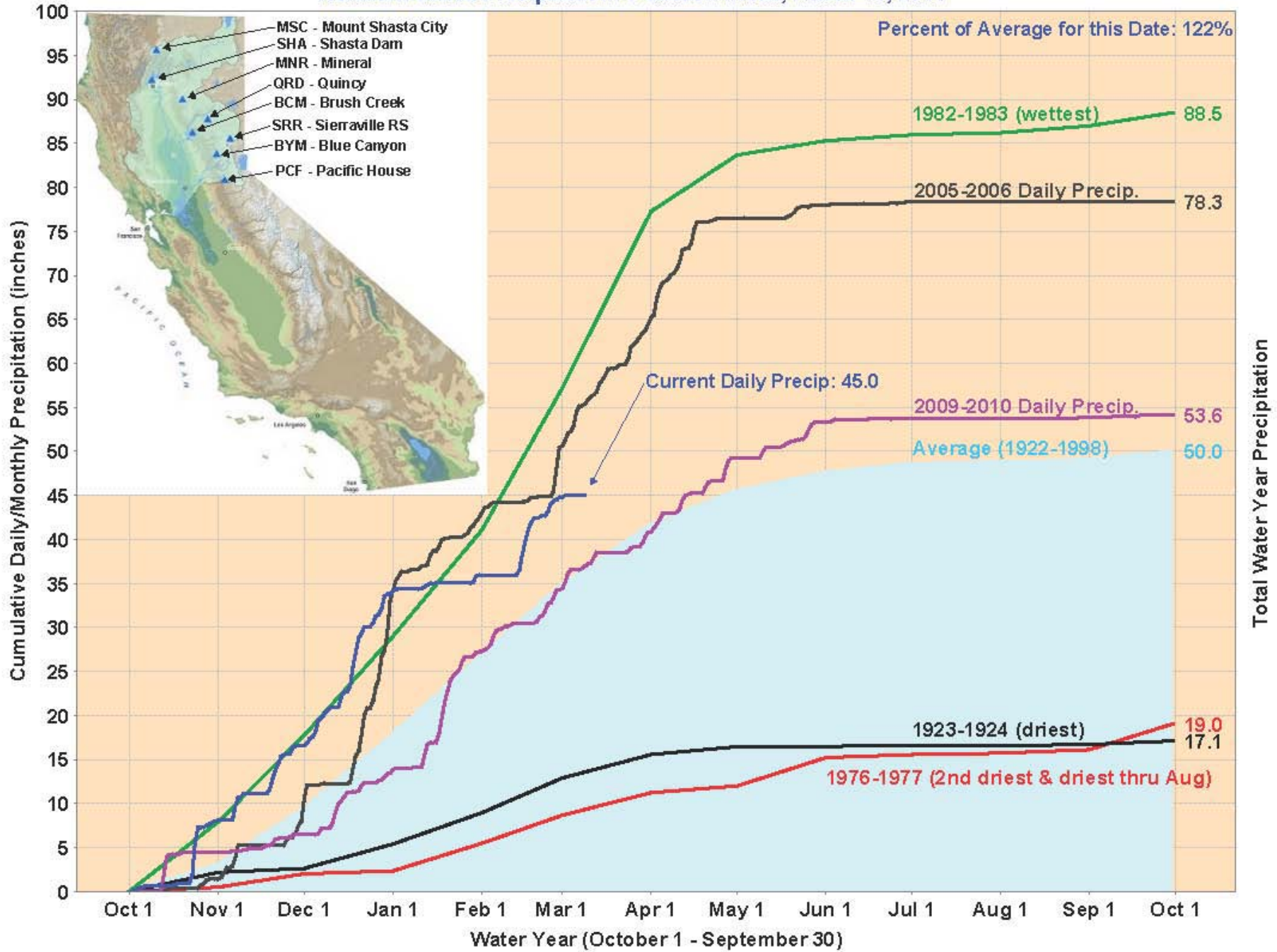
Statewide Snow Water Equivalents

March 1, 2011

Region	Inches	% Average
Northern Sierra	29.6	115
Central Sierra	33.4	125
Southern Sierra	31.2	140
Statewide	31.6	125



Northern Sierra Precipitation: 8-Station Index, March 10, 2011

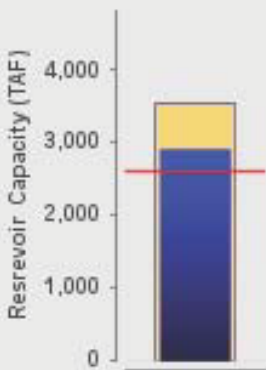




Reservoir Conditions - Lake Oroville



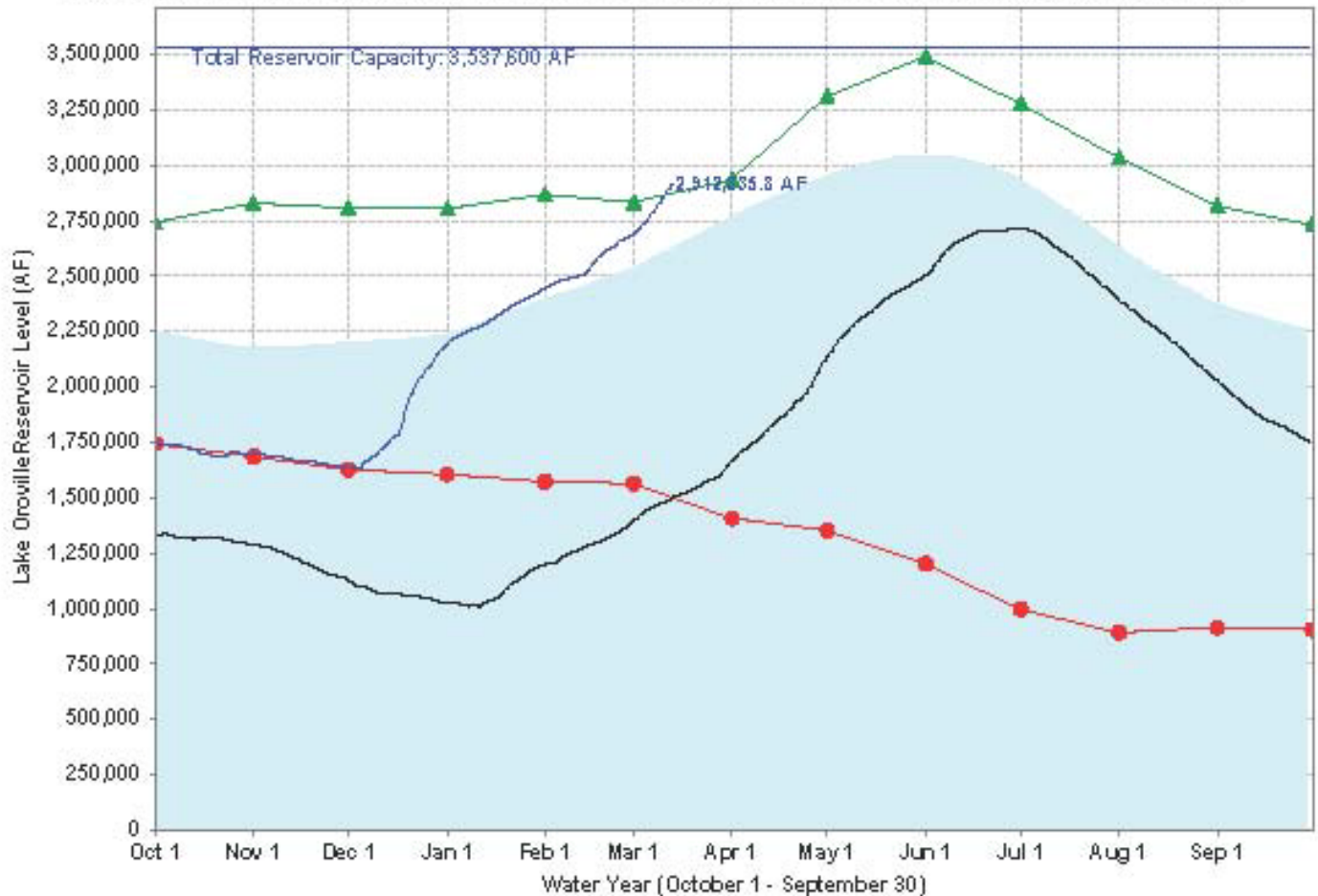
Lake Oroville Conditions (as of Midnight - March 13, 2011)



Current Level: 2,912,835.8 AF

82% (Total Capacity) | 111% (Historical Avg)

Lake Oroville Levels: Various Past Water Years and Current Water Year, Ending At Midnight March 13, 2011

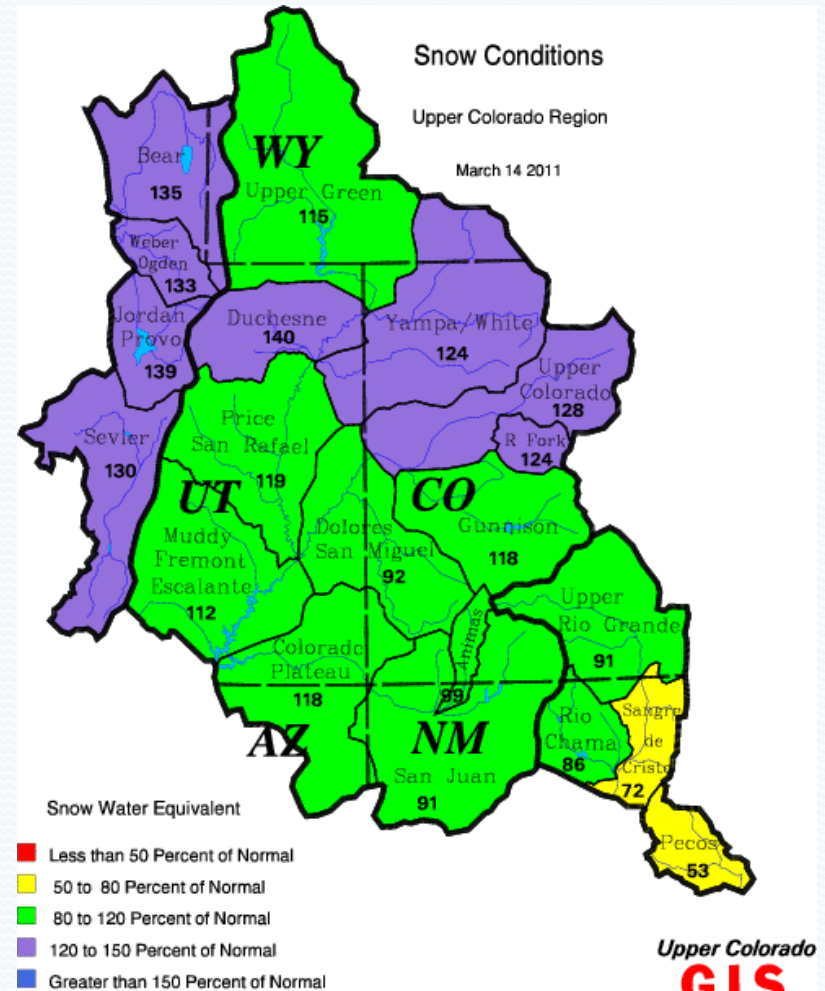


Historical Average — Total Reservoir Capacity — 1976-1977 (Driest) — 1982-1983 (Wettest) — 2009-2010 — Current: 2010-2011

Colorado River Conditions

March 14, 2011

- Upper Colorado water year 2011 precipitation to date
 - 119% of average
- Key Reservoir Levels
 - Lake Powell – 53% of cap.
 - Lake Mead – 43% of cap.
- Current Basin Snowpack
 - 119% of average
- Projected Lake Powell inflow
 - 105% of normal



Data Provided by the Natural Resource Conservation Service

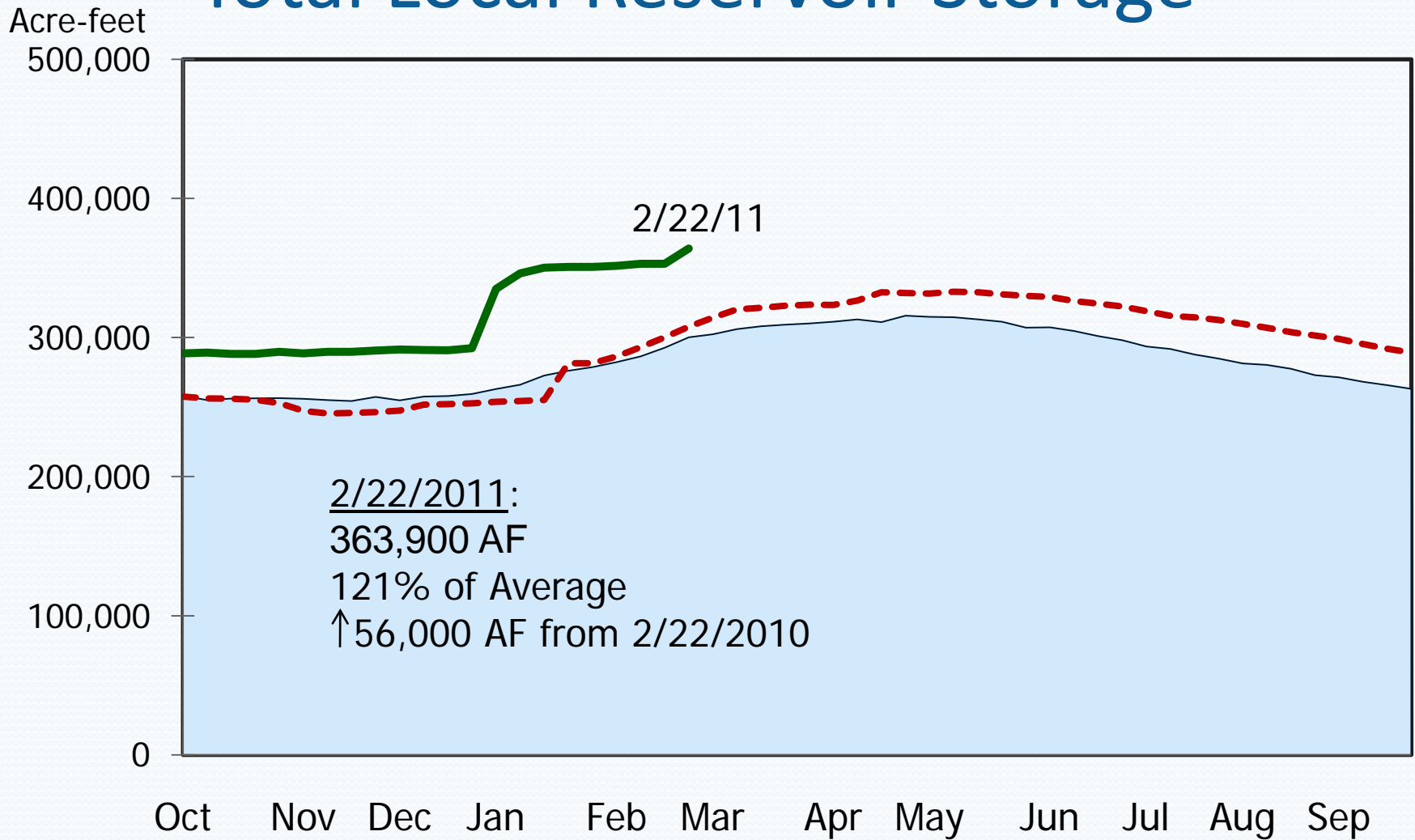


Local Precipitation

Station	July 1, 2010 – Mar 13, 2011	
	Actual inches	% Normal
Lindbergh Field	10.65	125
Ramona Airport	20.99	163



Total Local Reservoir Storage*



Average (2001-2010)
 WY 2010
 WY 2011

Regulatory Update

- Smelt-related State Water Project (SWP) pumping restrictions eased until summer
 - No lost water yet this year in Bay-Delta
- SWP Table A Allocation 60 percent for CY 2011
 - Possible it may go higher
- MWD staff to recommend ending water supply allocations at April board meeting
 - End of allocations would be effective immediately
 - Water Authority Board likely to take up allocation issue in April

